

Workshop

bre

Incentives for timber use-

**Who is better able to implement policy:
Public OR Private sectors**

Dr Vahik Enjily & Dr Dennis Jones

INTRODUCTION

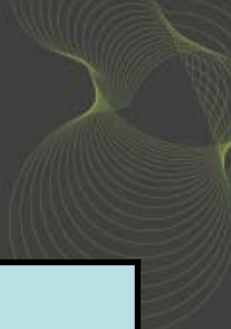
- What are we going to cover?
- Three areas of sustainability (wood related):
 - *Energy*
 - *Water*
 - *Waste*
- What incentives can there be?
- Why should they?
- When should they?
- Where (how) should they?
- Who should implement it?

What incentives can there be?

Energy	Water	Waste
1. Lower energy costs or taxes	• Financial	1. Recyclable product
2. Improved valuations	2=. Water quality	2. Less landfill / less waste
3. Quality of life	2=.Reduce water use	

Why should they?

Energy	Water	Waste
1. Renewable energy	1. Control of water flow-off	1. Non-hazardous waste
2. Reduce CO2	2. Reduce resource footprint	2= Recyclable product 2= Economics
3. Low price / flexible processing		2= Develop new products 2= Cost efficiency



When should they?

Energy

Water

Waste

- **Now**

- **Now**

- **Now**

2. Continuous R&D support

2. Ongoing

Where (How) should they?

Energy	Water	Waste
1. Tax Incentives	1. Tax policies	1. Tax relief as reward
2. Dependent on policies and regulations	1. Water regulations	2. Regulations
3. At regional level		

Who should implement it?

Energy	Water	Waste
1. EU / National Government	1. Companies	1. Local / National Government
2=. Regional Government	2. National Government	2= Businesses
2=. Businesses	3. Regional Government	2= Client demand